

OPERATION STOP ARM™

KNOW THE LAW OBEY THE LAW

Georgia Fines and Penalties:

When an Officer Catches You, the Penalties are . . .

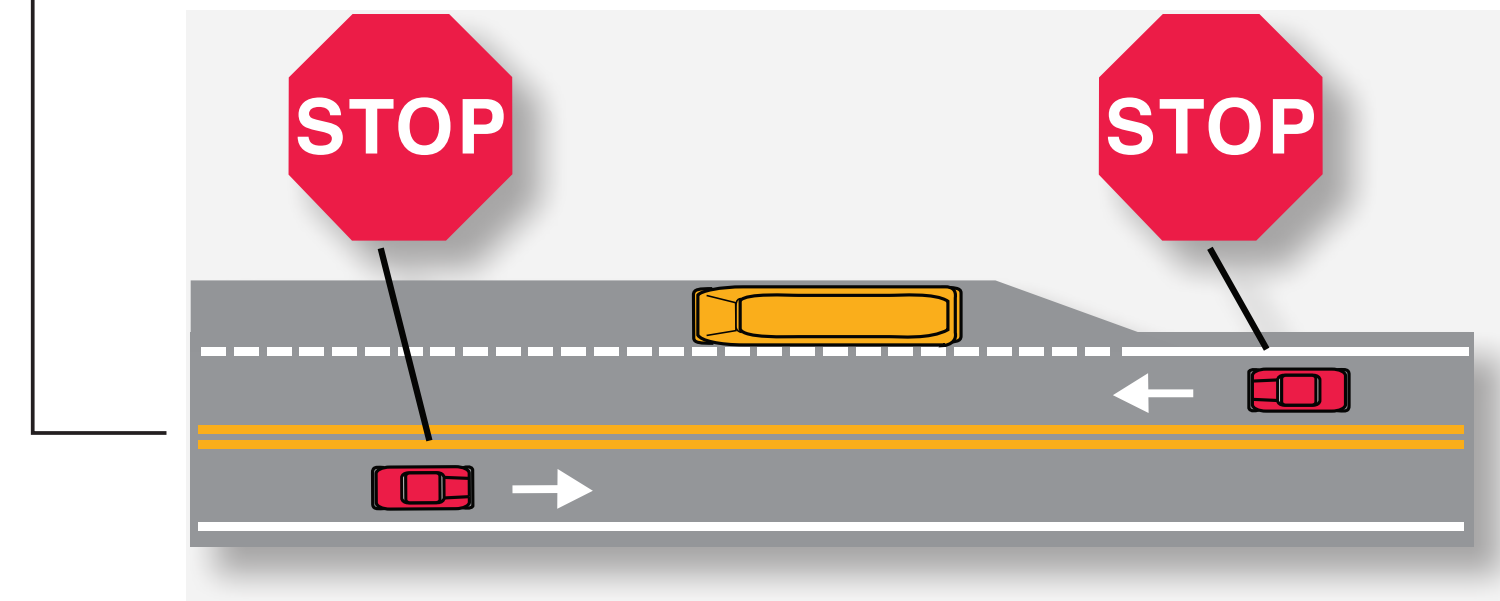
- Possible Court Appearance
- Up to \$1000 Fine
- 6 Points on Driving Record
- A Conviction Under 21 Years of Age Constitutes License Suspension

When a Stop Arm Camera Catches You, the Penalty is . . .

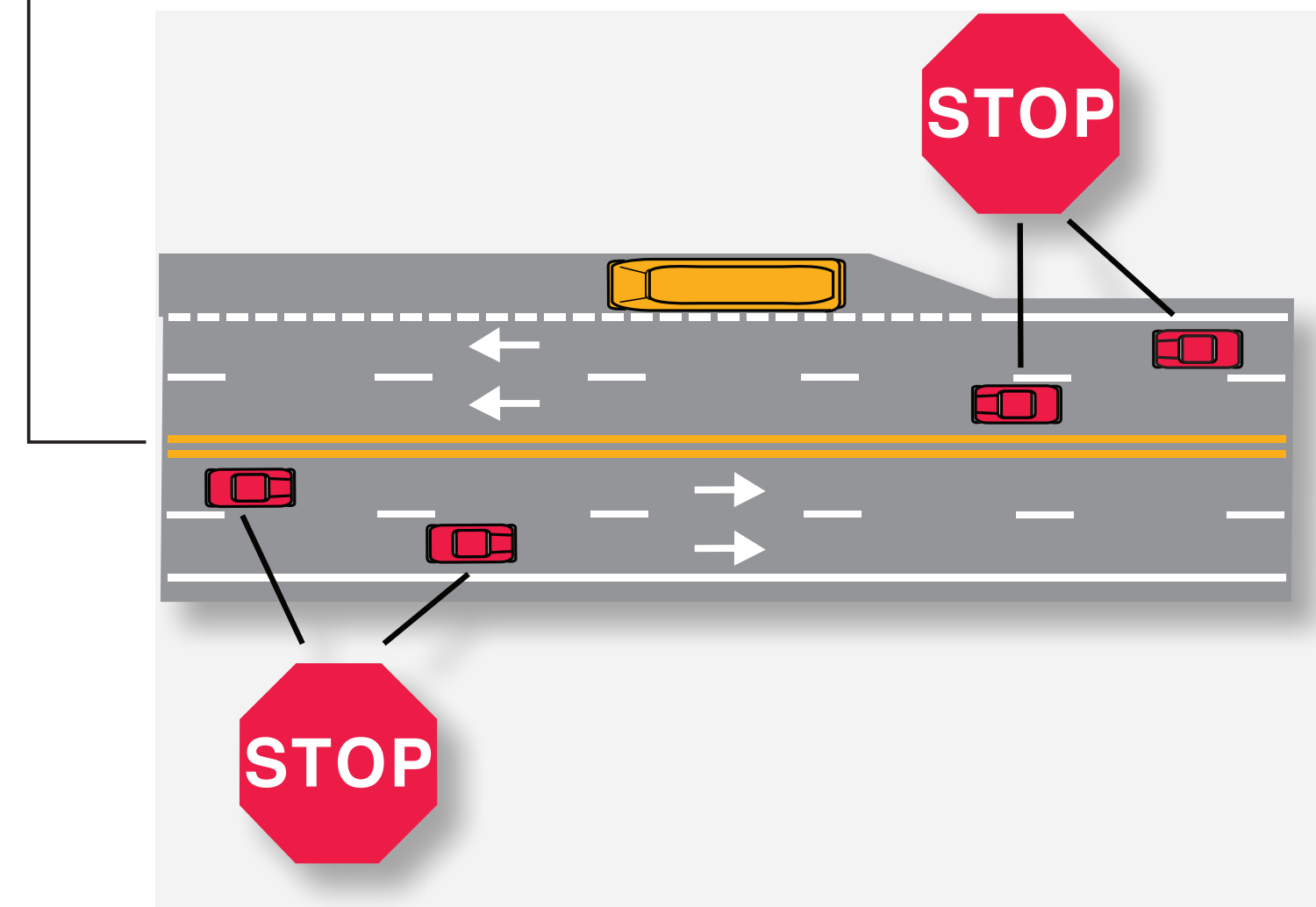
- A Civil Penalty of \$250.00

Ticket will be issued to the owner of the vehicle.

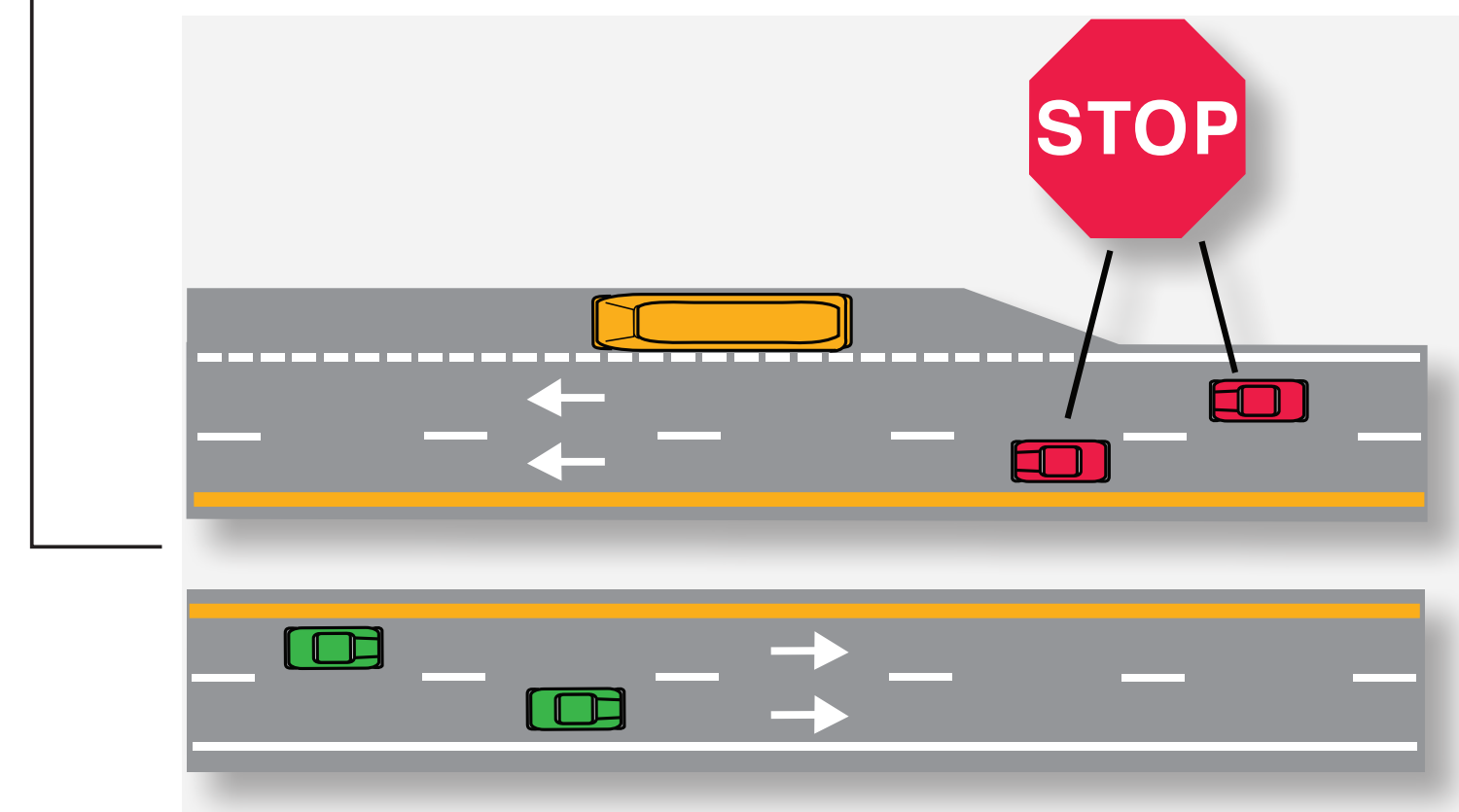
- **Two-lane roadway:**
When school bus stops for passengers, **ALL** traffic from both directions must stop.



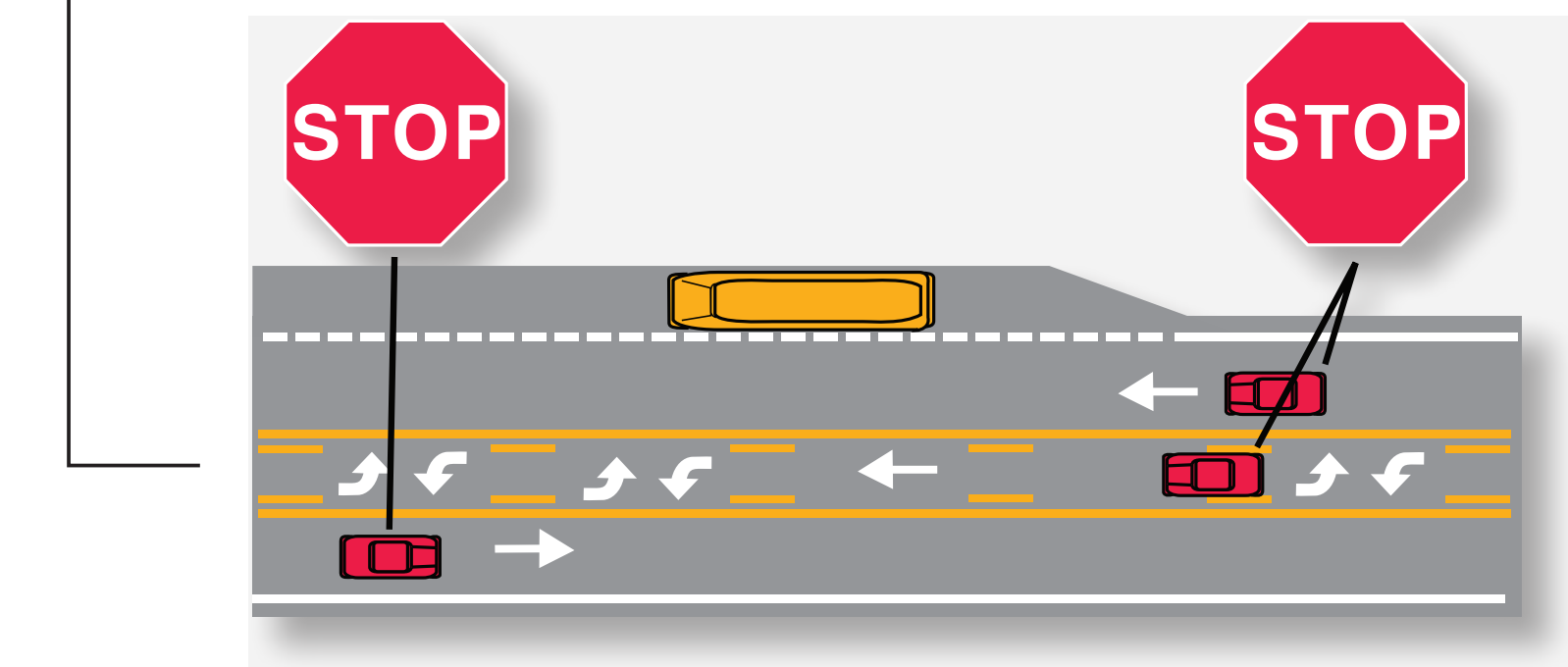
- **Four-lane roadway without a median separation:**
When school bus stops for passengers, **ALL** traffic from both directions must stop.



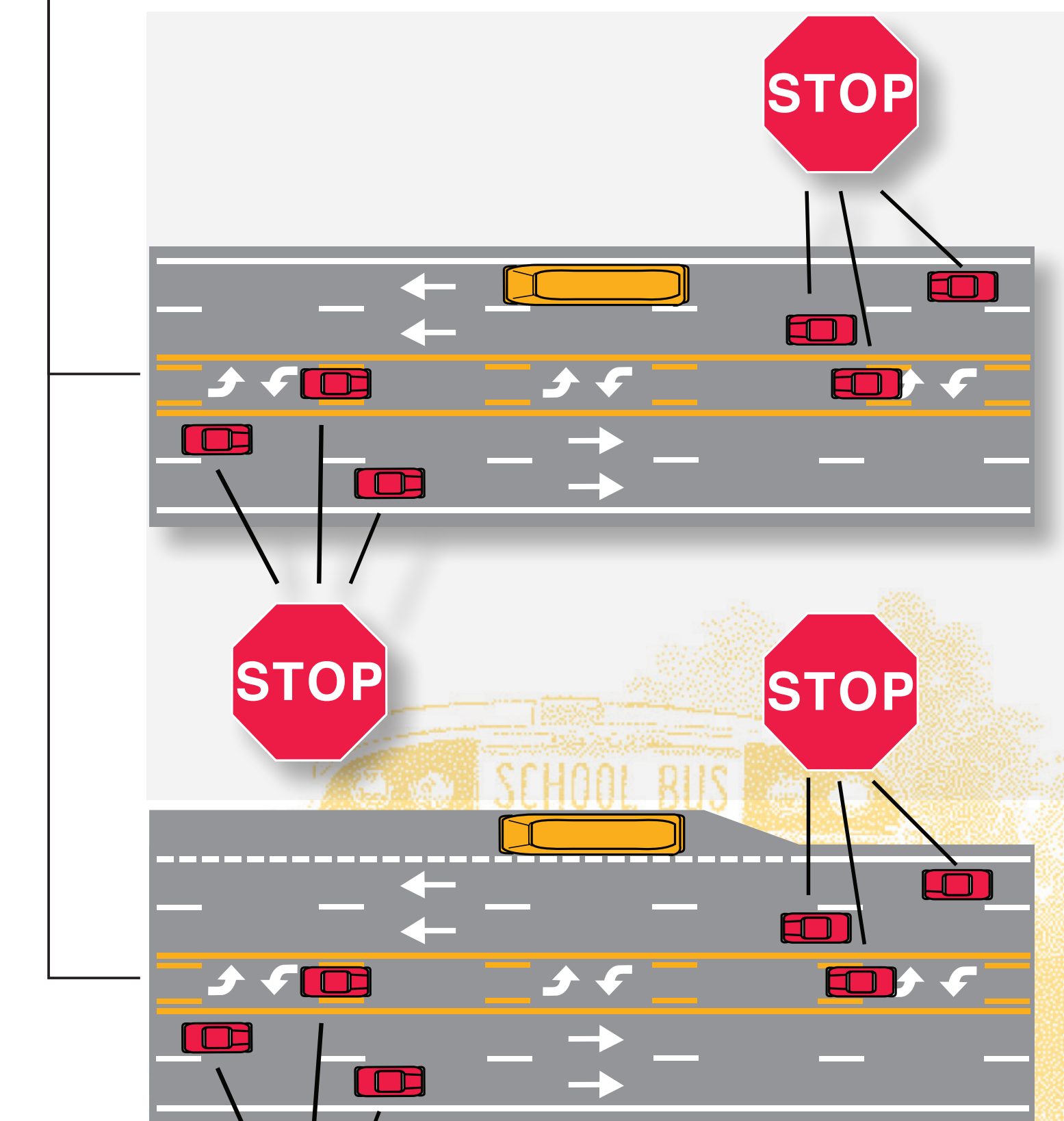
- **Divided highway of four lanes or more with a median separation:**
When school bus stops for passengers, only traffic following the bus must stop.



- **Two-lane roadway with a center turning lane:**
When school bus stops for passengers, **ALL** traffic from both directions must stop.



- **Roadway of four lanes or more with a center turning lane:**
When school bus stops for passengers, **ALL** traffic from both directions must stop.



IT'S THE LAW